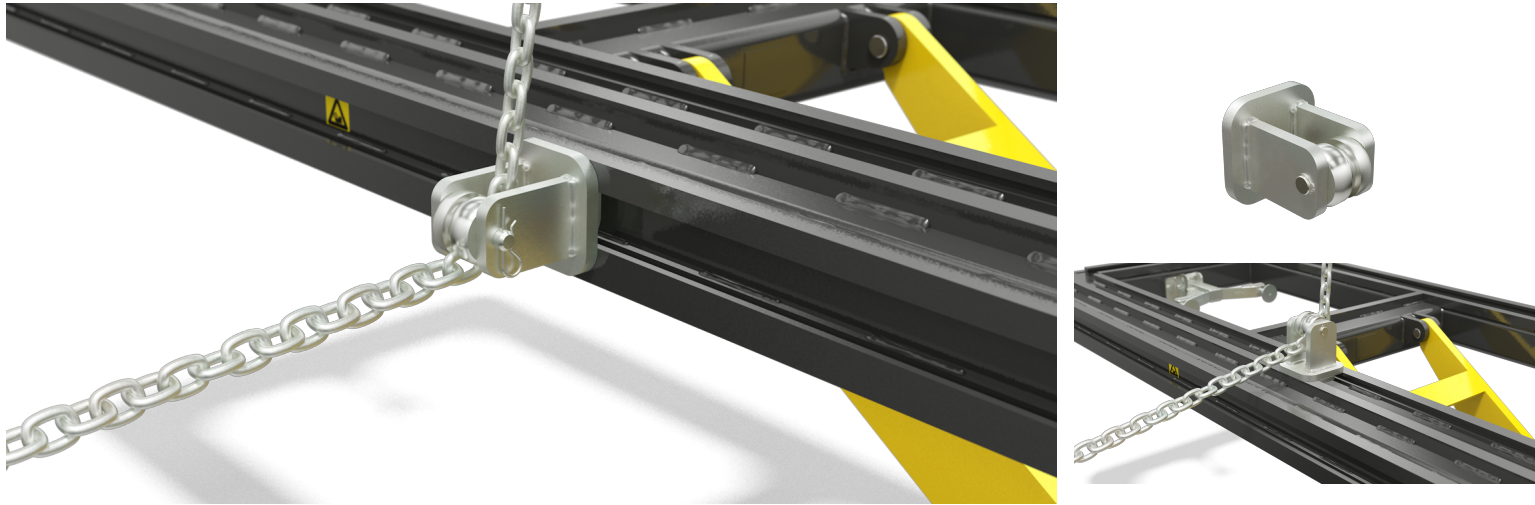


D10(T) Down Pull Adapter



The UnoLiner D10 Down Pull Adapter for down and vector pulling is versatile and easy to secure with its one-bolt locking system. It can be placed all around each UnoLiner bench frame machine and in various positions on the *P10 Draw Aligner*. Compared to other down pull support systems, the D10 requires fewer movements with the draw aligner, saving time and money. A new version, the D10T, is available for UnoLiner's two-way locking benches.

Features

- ✓ Quick Lock one-bolt locking system
- ✓ Multipurpose pulling guide
- ✓ Adjustable angle
- ✓ D10T version for two-way locking bench
- ✓ Perfect for combining with P10 and P20

Technical data

Length	140	mm
Width	100	mm
Height	80	mm
Weight	3	kg

